



CONFIDENTIAL Executive Summary



Hungry Howie's - Fresno
4209 E Shields
Fresno, CA

Purchase Price:	\$449,000
Total Annual Sales*:	\$855,181
Inventory:	\$5,000
Managed Cash Flow**:	\$213,660
Owner-Operated Cash Flow**:	\$248,301

List price does not include inventory, franchise transfer fees, or lease security deposits.

* T13 Periods Ending P8 2020

** Cash Flow is a net income projection based on trailing 12 months sales and expenses as stated on Seller's P&Ls. Adjustments are made to reflect brand norms for the region and/or expected increases/decreases in costs. Analysis is for proforma purposes only, Buyer should complete his own due diligence review. Ask your agent for summary of adjustments.

Franchise Information:

With over 45 years of experience, Hungry Howie's is consistently ranked as one of the top pizza franchises in the nation. Hungry Howie's has grown to over 550 locations in 20 states and is home to the Original Flavored Crust Pizza. Their pizzas are made from the finest ingredients- 100% mozzarella cheese and dough made fresh daily, with 8 mouthwatering flavors to choose from. Franchisor requirements include \$100,000 liquid, \$300,000 net worth, Credit score above 700 and the ability to obtain financing for up to \$275,000.

Franchise Agreement Expiration: 2025

Royalty: 5.0%

Remodel Requirements: Completed in 2016

Transfer Fee: \$7,500

Advertising: 7.0%

Training Location: Michigan

Training Period: 1 month

Lease Information:

Monthly Base Rent: \$1,040

Percentage Rent: None

Expiration: 2025

Options: 3x5yr

CAM: Included

Monthly Property Tax: \$79

Security Deposit: \$1,040

Real Property Available: No

Increases: 3% annually

Location Details:

Business Established: 1994

Owner Since: 2016

Hours of Operation: 11a-11p

Building Type: Inline

Seating: None

Licenses Needed: Business, Health

Building Size: 1,050 SF

Employees: 14

Equipment Value: \$120,000

Inline restaurant located on the corner of N Cedar Ave and E Shields Ave. Other tenants include a liquor store, salon, embroidery shop, tax service, barber shop and shoe repair store. A BP gas station is located on the corner. A Family Dollar, Rite Aid and Walmart Neighborhood Grocery are also on the same corner. The entrance to 168 (Sierra Fwy) is within a quarter mile. Many residential properties in area. Nearby competitors include Domino's and Romeo's Pizza.

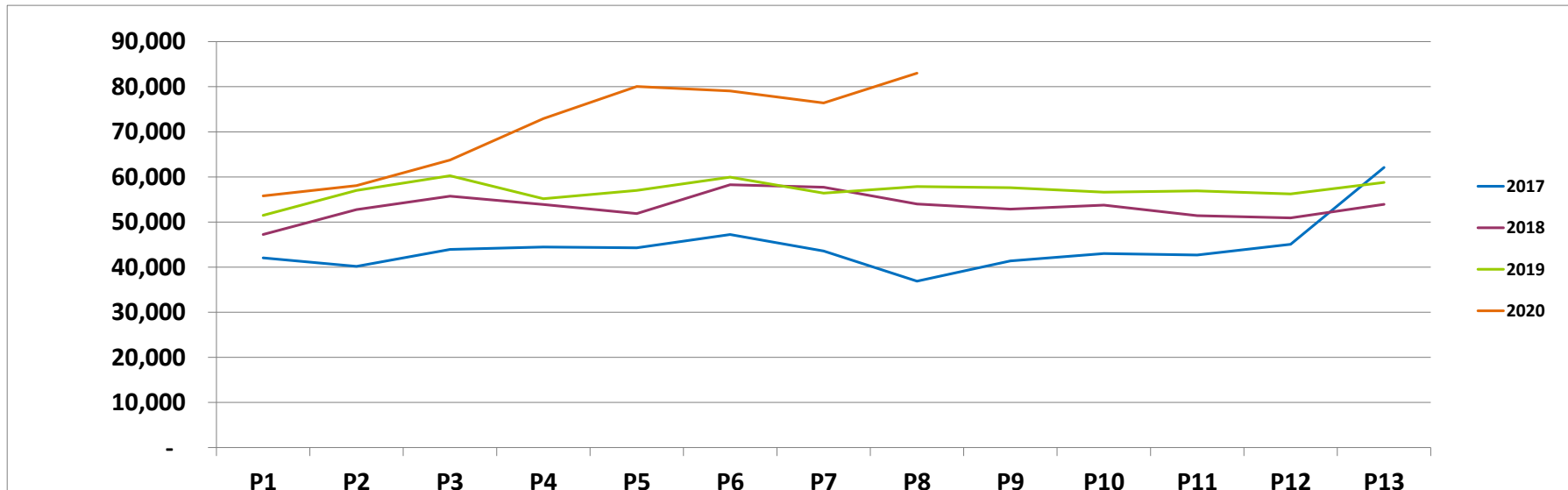
Remember you have agreed to keep all FranBizNetwork listings confidential.

As a part of the due diligence process you are encouraged to contact other franchisees with questions about the brand, but remember you are bound by a confidentiality agreement and cannot share the location or any details about the business you are considering buying. Please direct any questions you might have for the Seller to your FranBizNetwork agent. Feel free to visit the location(s) as a customer, but be discreet and do not ask questions of employees, managers, or other customers. Please do not draw unnecessary attention to yourself, as rumors of a pending sale can hurt the business.

MONTHLY SALES

Hungry Howie's - Fresno

	P1	P2	P3	P4	P5	P6	P7	P8	P9	P10	P11	P12	P13	TOTAL
2017	\$42,036	\$40,173	\$43,917	\$44,447	\$44,273	\$47,229	\$43,561	\$36,887	\$41,370	\$43,014	\$42,690	\$45,049	\$62,103	\$576,749
2018	\$47,240	\$52,743	\$55,741	\$53,904	\$51,853	\$58,267	\$57,706	\$54,007	\$52,853	\$53,763	\$51,403	\$50,914	\$53,913	\$694,307
\$ +/-	\$5,204	\$12,570	\$11,824	\$9,457	\$7,580	\$11,038	\$14,145	\$17,120	\$11,483	\$10,749	\$8,713	\$5,865	(\$8,190)	\$117,558
% +/-	12%	31%	27%	21%	17%	23%	32%	46%	28%	25%	20%	13%	-13%	20%
2018	\$47,240	\$52,743	\$55,741	\$53,904	\$51,853	\$58,267	\$57,706	\$54,007	\$52,853	\$53,763	\$51,403	\$50,914	\$53,913	\$694,307
2019	\$51,485	\$56,993	\$60,262	\$55,171	\$57,006	\$59,946	\$56,404	\$57,846	\$57,608	\$56,602	\$56,905	\$56,243	\$58,782	\$741,253
\$ +/-	\$4,245	\$4,250	\$4,521	\$1,267	\$5,153	\$1,679	(\$1,302)	\$3,839	\$4,755	\$2,839	\$5,502	\$5,329	\$4,869	\$46,946
% +/-	9%	8%	8%	2%	10%	3%	-2%	7%	9%	5%	11%	10%	9%	7%
2019	\$51,485	\$56,993	\$60,262	\$55,171	\$57,006	\$59,946	\$56,404	\$57,846	\$57,608	\$56,602	\$56,905	\$56,243	\$58,782	\$741,253
2020	\$55,796	\$58,071	\$63,735	\$72,939	\$80,053	\$79,056	\$76,386	\$83,005	\$0	\$0	\$0	\$0	\$0	\$569,041
\$ +/-	\$4,311	\$1,078	\$3,473	\$17,768	\$23,047	\$19,110	\$19,982	\$25,159						\$113,928
% +/-	8%	2%	6%	32%	40%	32%	35%	43%						25%





Hungry Howie's - Fresno

PROFORMA - MANAGED

	T13 Periods Ending P8 2020	
SALES	\$ 855,181	
COGS:	\$ 239,451	28.0%
Crew Labor:	\$ 171,036	20.0%
GM:	\$ 27,000	3.2%
Other Store Level Mgmt:	\$ -	0.0%
Workers Comp*:	\$ 8,516	4.3%
Payroll Taxes*:	\$ 47,529	24.0%
R&M:	\$ 5,986	0.7%
Non-Ingredient:	\$ 10,262	1.2%
Utilities:	\$ 24,870	2.9%
Rent:	\$ 12,480	1.5%
Property Tax:	\$ 946	0.1%
Nat'l Advertising:	\$ 59,863	7.0%
Royalty:	\$ 42,759	5.0%
Insurance:	\$ 1,670	0.2%
Bank Charges:	\$ 600	0.1%
Credit Card Fees:	\$ 14,538	1.7%
Professional Services:	\$ 4,500	0.5%
Security:	\$ 1,300	0.2%
Permits & Licenses:	\$ 1,015	0.1%
Cash Over/Short:	\$ 855	0.1%
Other G&A:	\$ 3,015	0.4%
Total Expenses:	\$ 678,191	79.3%
Delivery Income:	\$ 36,670	4.3%
Managed Cash Flow:	\$ 213,660	25.0%

*Workers Comp and Payroll Taxes shown as a % of Total Labor

Executive Summary materials and Proforma were derived from documents provided by Seller and were prepared by FranBizNetwork to help prospective Buyers complete a summary review. These materials should not replace the Buyer's review of actual books and records and a thorough due diligence process. Buyers should not rely on these materials as definitive, but should instead consult the actual due diligence documents.

PROFORMA - OWNER OPERATED

	T13 Periods Ending P8 2020	
SALES	\$ 855,181	
COGS:	\$ 239,451	28.0%
Crew Labor:	\$ 171,036	20.0%
Assume Owner is GM		
Other Store Level Mgmt:	\$ -	0.00%
Workers Comp*:	\$ 7,355	4.3%
Payroll Taxes*:	\$ 41,049	24.0%
R&M:	\$ 5,986	0.7%
Non-Ingredient:	\$ 10,262	1.2%
Utilities:	\$ 24,870	2.9%
Rent:	\$ 12,480	1.5%
Property Tax:	\$ 946	0.1%
Nat'l Advertising:	\$ 59,863	7.0%
Royalty:	\$ 42,759	5.0%
Insurance:	\$ 1,670	0.2%
Bank Charges:	\$ 600	0.1%
Credit Card Fees:	\$ 14,538	1.7%
Professional Services:	\$ 4,500	0.5%
Security:	\$ 1,300	0.2%
Permits & Licenses:	\$ 1,015	0.1%
Cash Over/Short:	\$ 855	0.1%
Other G&A:	\$ 3,015	0.4%
Total Expenses:	\$ 643,550	75.3%
Delivery Income:	\$ 36,670	4.3%
Owner-Operated Cash Flow:	\$ 248,301	29.0%

*Workers Comp and Payroll Taxes shown as a % of Total Labor