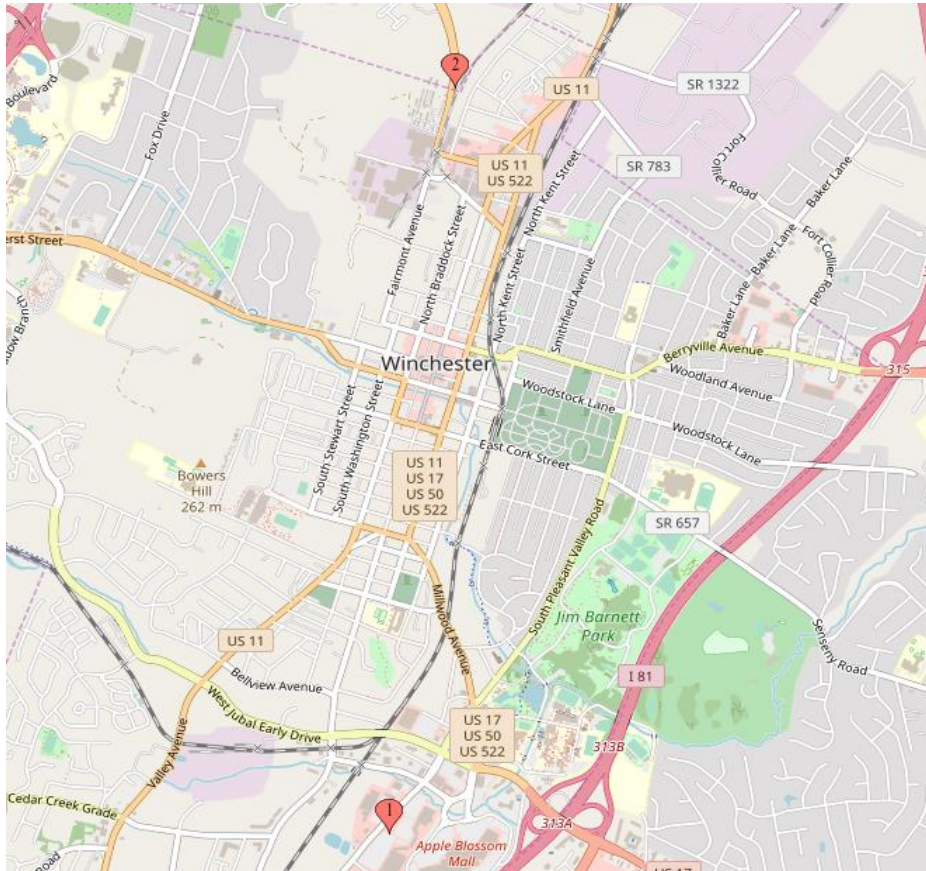


Jimmy John's - 2 units, VA

\$890,000



Stores are within 15 minutes of each other in Winchester, VA

Store	T13 Periods Ending P13 2018	Cash Flow*
2033 South Pleasant Valley Road	\$743,589	\$106,378
240 Rivendell Court (Space 3)	\$689,380	\$114,639
TOTAL	\$1,432,969	\$221,017



CONFIDENTIAL Executive Summary



Purchase Price:	\$890,000	#2086 - Winchester
Total Annual Sales*:	\$743,589	2033 South Pleasant Valley Road
Inventory:	\$6,000	Winchester, VA 22601
Managed Cash Flow**:	\$106,378	

* T13 Periods Ending P13 2018

** Cash Flow is a net income projection based on trailing 12 months sales and expenses as stated on Seller's P&Ls. Adjustments are made to reflect brand norms for the region and/or expected increases/decreases in costs. Analysis is for proforma purposes only, Buyer should complete his own due diligence review. Ask your agent for summary of adjustments.

Franchise Information:

Headquartered in Champaign, IL, Jimmy John's was founded in 1983 and now boasts over 2,500 units nationwide. In September 2016 a majority stake was sold to Roark Capital, a private equity firm also invested in Arby's, Carvel, Auntie Anne's Pretzels, Wingstop and Cinnabon, among others. A simple menu and good product with only the freshest ingredients sets the brand apart in the sandwich QSR segment. Franchisor requires a minimum net worth of \$300K with at least \$80K in liquid assets, or commensurate with purchase. Restaurant experience preferred but not required.

Franchise Agreement Expiration: 2022
Royalty: 6.0%

Transfer Fee: \$12,000
Advertising: 4.5%

Training Location: Champaign, IL
Training Period: 2 weeks

Remodel Requirements: Interior due in 2022

Lease Information:

Monthly Base Rent: \$4,260
Percentage Rent: None
Expiration: 2022

Options: 2x5yrs
CAM: \$216
Monthly Property Tax: \$192

Security Deposit: \$4,125
Real Property Available: No
Increases: 3% annually

Location Details:

Business Established: 2012
Owner Since: 2012
Hours of Operation: 10:30a-10p

Building Type: Inline
Seating: 46
Licenses Needed: Business, Health

Building Size: 1,800 SF
Employees: 24
Equipment Value: \$129,537

Great store that consistently performs in the top 20% of all Jimmy John's! Located in a strip mall near a large mall. Big box stores Walmart and Best Buy are in close proximity. Other tenants in/around strip mall include Hobby Lobby, Verizon Wireless, Sweet Frog and a grocery store. An Amazon distribution center and FBI building will be opening in the area soon. Nearby competition includes Jersey Mike's and Firehouse Subs.

Remember you have agreed to keep all FranBizNetwork listings confidential.

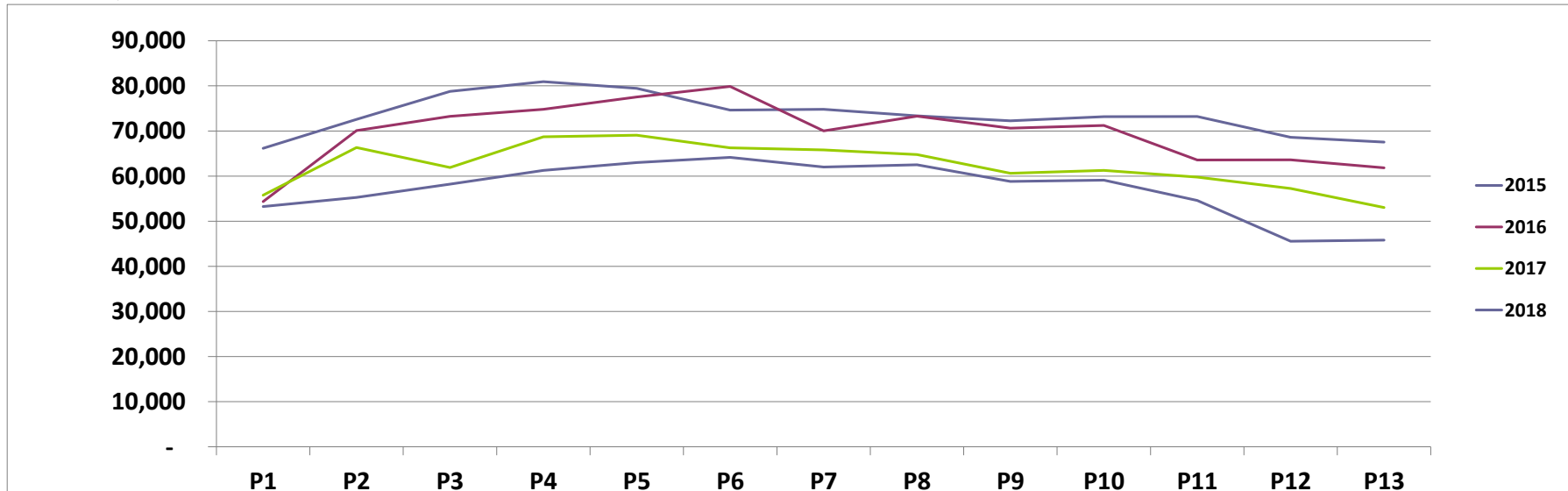
As a part of the due diligence process you are encouraged to contact other franchisees with questions about the brand, but remember you are bound by a confidentiality agreement and cannot share the location or any details about the business you are considering buying. Please direct any questions you might have for the Seller to your FranBizNetwork agent. Feel free to visit the location(s) as a customer, but be discreet and do not ask questions of employees, managers, or other customers. Please do not draw unnecessary attention to yourself, as rumors of a pending sale can hurt the business.

MONTHLY SALES

#2086 - Winchester

	P1	P2	P3	P4	P5	P6	P7	P8	P9	P10	P11	P12	P13	TOTAL
2015	\$66,161	\$72,578	\$78,790	\$80,933	\$79,442	\$74,629	\$74,794	\$73,346	\$72,246	\$73,177	\$73,201	\$68,602	\$67,546	\$955,445
2016	\$54,350	\$70,095	\$73,244	\$74,816	\$77,525	\$79,871	\$70,026	\$73,292	\$70,623	\$71,233	\$63,553	\$63,604	\$61,815	\$904,047
\$ +/-	(\$11,811)	(\$2,483)	(\$5,546)	(\$6,117)	(\$1,917)	\$5,242	(\$4,768)	(\$54)	(\$1,623)	(\$1,944)	(\$9,648)	(\$4,998)	(\$5,731)	(\$51,398)
% +/-	-18%	-3%	-7%	-8%	-2%	7%	-6%	0%	-2%	-3%	-13%	-7%	-8%	-5%
2016	\$54,350	\$70,095	\$73,244	\$74,816	\$77,525	\$79,871	\$70,026	\$73,292	\$70,623	\$71,233	\$63,553	\$63,604	\$61,815	\$904,047
2017	\$55,777	\$66,322	\$61,886	\$68,713	\$69,063	\$66,250	\$65,812	\$64,759	\$60,626	\$61,252	\$59,788	\$57,249	\$53,034	\$810,531
\$ +/-	\$1,427	(\$3,773)	(\$11,358)	(\$6,103)	(\$8,462)	(\$13,621)	(\$4,214)	(\$8,533)	(\$9,997)	(\$9,981)	(\$3,765)	(\$6,355)	(\$8,781)	(\$93,516)
% +/-	3%	-5%	-16%	-8%	-11%	-17%	-6%	-12%	-14%	-14%	-6%	-10%	-14%	-10%
2017	\$55,777	\$66,322	\$61,886	\$68,713	\$69,063	\$66,250	\$65,812	\$64,759	\$60,626	\$61,252	\$59,788	\$57,249	\$53,034	\$810,531
2018	\$53,263	\$55,271	\$58,224	\$61,257	\$63,015	\$64,151	\$62,004	\$62,508	\$58,822	\$59,108	\$54,591	\$45,559	\$45,816	\$743,589
\$ +/-	(\$2,514)	(\$11,051)	(\$3,662)	(\$7,456)	(\$6,048)	(\$2,099)	(\$3,808)	(\$2,251)	(\$1,804)	(\$2,144)	(\$5,197)	(\$11,690)	(\$7,218)	(\$66,942)
% +/-	-5%	-17%	-6%	-11%	-9%	-3%	-6%	-3%	-3%	-4%	-9%	-20%	-14%	-8%

*Decline in sales is due to competition.





**#2086 - Winchester
PROFORMA**

	T13 Periods Ending P13 2018	
SALES	\$ 743,589	
COGS:	\$ 191,251	25.7%
Crew Labor:	\$ 153,625	20.7%
GM:	\$ 43,800	5.9%
Workers Comp:	\$ 3,949	2.0%
Payroll Taxes:	\$ 39,386	20.0%
R&M:	\$ 2,974	0.4%
Non-Ingredient:	\$ 4,462	0.6%
Utilities:	\$ 16,185	2.2%
Rent:	\$ 51,120	6.9%
CAM:	\$ 2,592	0.3%
Property Tax:	\$ 2,304	0.3%
Nat'l Advertising:	\$ 33,462	4.5%
Royalty:	\$ 44,615	6.0%
Insurance:	\$ 5,625	0.8%
Bank Charges:	\$ 600	0.1%
Credit Card Fees:	\$ 23,051	3.1%
Professional Services:	\$ 4,500	0.6%
Laundry/Uniforms:	\$ 1,270	0.2%
Pest Control:	\$ 400	0.1%
Permits & Licenses:	\$ 1,755	0.2%
Other G&A:	\$ 1,505	0.2%
Total Expenses:	\$ 637,211	85.7%
Managed Cash Flow:	\$ 106,378	14.3%

Executive Summary materials and Proforma were derived from documents provided by Seller and were prepared by FranBizNetwork to help prospective Buyers complete a summary review. These materials should not replace the Buyer's review of actual books and records and a thorough due diligence process. Buyers should not rely on these materials as definitive, but should instead consult the actual due diligence documents.



CONFIDENTIAL Executive Summary



Purchase Price: \$890,000
Total Annual Sales*: \$689,380
Inventory: \$6,000
Managed Cash Flow**: \$114,639

#2713 - Winchester
240 Rivendell Court (Space 3)
Winchester, VA 22603

* T13 Periods Ending P13 2018

** Cash Flow is a net income projection based on trailing 12 months sales and expenses as stated on Seller's P&Ls. Adjustments are made to reflect brand norms for the region and/or expected increases/decreases in costs. Analysis is for proforma purposes only, Buyer should complete his own due diligence review. Ask your agent for summary of adjustments.

Franchise Information:

Headquartered in Champaign, IL, Jimmy John's was founded in 1983 and now boasts over 2,500 units nationwide. In September 2016 a majority stake was sold to Roark Capital, a private equity firm also invested in Arby's, Carvel, Auntie Anne's Pretezels, Wingstop and Cinnabon, among others. A simple menu and good product with only the freshest ingredients sets the brand apart in the sandwich QSR segment. Franchisor requires a minimum net worth of \$300K with at least \$80K in liquid assets, or commensurate with purchase. Restaurant experience preferred but not required.

Franchise Agreement Expiration: 2024
Royalty: 6.0%

Transfer Fee: \$12,000
Advertising: 4.5%

Training Location: Champaign, IL
Training Period: 2 weeks

Remodel Requirements: Interior due in 2024

Lease Information:

Monthly Base Rent: \$2,810
Percentage Rent: None
Expiration: 2019

Options: 2x5yrs
CAM: \$281
Monthly Property Tax: \$238

Security Deposit: \$2,810
Real Property Available: No
Increases: 12% @ 1st 5yrs, 13% @ 2nd 5yrs

Location Details:

Business Established: 2014
Owner Since: 2014
Hours of Operation: 10:30a -10p

Building Type: Inline endcap w/ drive-thru
Seating: 39
Licenses Needed: Business, Health

Building Size: 1,645 SF
Employees: 22
Equipment Value: \$166,551

Great store that consistently performs in the top 20% of all Jimmy John's! This store is located on the end of a strip mall and has a drive-thru. Located near the intersection on US-37 and US Rt. 522. Stores nearby include a large grocery & gas station, 2 banks, Dollar Tree and Great Clips. A high school and Holiday Inn are located within 1 mile. An Amazon distribution center and FBI building will be opening in the area soon. Nearby competition includes Subway.

Remember you have agreed to keep all FranBizNetwork listings confidential.

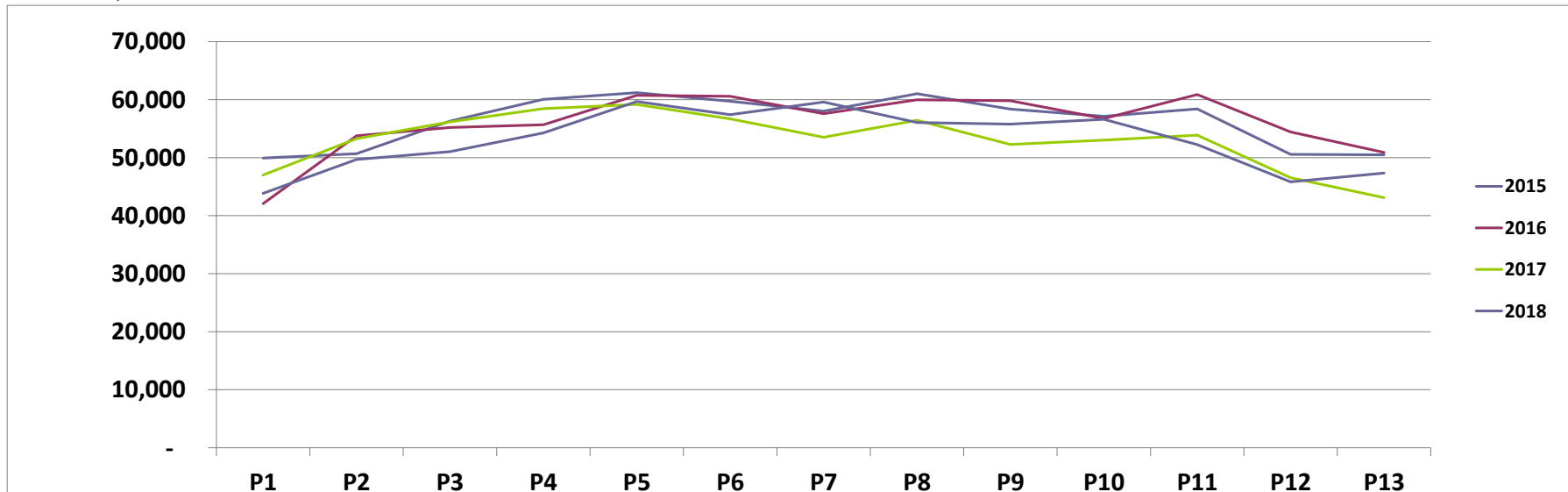
As a part of the due diligence process you are encouraged to contact other franchisees with questions about the brand, but remember you are bound by a confidentiality agreement and cannot share the location or any details about the business you are considering buying. Please direct any questions you might have for the Seller to your FranBizNetwork agent. Feel free to visit the location(s) as a customer, but be discreet and do not ask questions of employees, managers, or other customers. Please do not draw unnecessary attention to yourself, as rumors of a pending sale can hurt the business.

MONTHLY SALES

#2713 - Winchester

	P1	P2	P3	P4	P5	P6	P7	P8	P9	P10	P11	P12	P13	TOTAL
2015	\$49,935	\$50,669	\$56,313	\$60,062	\$61,206	\$59,715	\$58,020	\$61,028	\$58,374	\$57,130	\$58,389	\$50,582	\$50,480	\$731,903
2016	\$42,083	\$53,764	\$55,200	\$55,676	\$60,739	\$60,585	\$57,573	\$59,984	\$59,804	\$56,752	\$60,880	\$54,434	\$50,916	\$728,390
\$ +/-	(\$7,852)	\$3,095	(\$1,113)	(\$4,386)	(\$467)	\$870	(\$447)	(\$1,044)	\$1,430	(\$378)	\$2,491	\$3,852	\$436	(\$3,513)
% +/-	-16%	6%	-2%	-7%	-1%	1%	-1%	-2%	2%	-1%	4%	8%	1%	0%
2016	\$42,083	\$53,764	\$55,200	\$55,676	\$60,739	\$60,585	\$57,573	\$59,984	\$59,804	\$56,752	\$60,880	\$54,434	\$50,916	\$728,390
2017	\$47,014	\$53,277	\$56,181	\$58,453	\$59,172	\$56,696	\$53,509	\$56,441	\$52,293	\$53,033	\$53,885	\$46,560	\$43,102	\$689,616
\$ +/-	\$4,931	(\$487)	\$981	\$2,777	(\$1,567)	(\$3,889)	(\$4,064)	(\$3,543)	(\$7,511)	(\$3,719)	(\$6,995)	(\$7,874)	(\$7,814)	(\$38,774)
% +/-	12%	-1%	2%	5%	-3%	-6%	-7%	-6%	-13%	-7%	-11%	-14%	-15%	-5%
2017	\$47,014	\$53,277	\$56,181	\$58,453	\$59,172	\$56,696	\$53,509	\$56,441	\$52,293	\$53,033	\$53,885	\$46,560	\$43,102	\$689,616
2018	\$43,850	\$49,678	\$51,041	\$54,260	\$59,678	\$57,402	\$59,596	\$56,045	\$55,789	\$56,621	\$52,254	\$45,816	\$47,350	\$689,380
\$ +/-	(\$3,164)	(\$3,599)	(\$5,140)	(\$4,193)	\$506	\$706	\$6,087	(\$396)	\$3,496	\$3,588	(\$1,631)	(\$744)	\$4,248	(\$236)
% +/-	-7%	-7%	-9%	-7%	1%	1%	11%	-1%	7%	7%	-3%	-2%	10%	0%

*Decline in sales is due to competition.





#2713 - Winchester PROFORMA

	T13 Periods Ending P13 2018	
SALES	\$ 689,380	
COGS:	\$ 171,104	24.8%
Crew Labor:	\$ 145,597	21.1%
GM:	\$ 39,800	5.8%
Workers Comp:	\$ 3,708	2.0%
Payroll Taxes:	\$ 29,571	16.0%
R&M:	\$ 1,723	0.3%
Non-Ingredient:	\$ 6,549	1.0%
Utilities:	\$ 15,905	2.3%
Rent:	\$ 33,720	4.9%
CAM:	\$ 3,372	0.5%
Property Tax:	\$ 2,856	0.4%
Nat'l Advertising:	\$ 31,022	4.5%
Royalty:	\$ 41,363	6.0%
Insurance:	\$ 9,100	1.3%
Bank Charges:	\$ 600	0.1%
Credit Card Fees:	\$ 19,992	2.9%
Professional Services:	\$ 4,500	0.7%
Laundry/Uniforms:	\$ 1,205	0.2%
Pest Control:	\$ 400	0.1%
Permits & Licenses:	\$ 1,310	0.2%
Cash Over/Short:	\$ 689	0.1%
Other G&A:	\$ 1,000	0.1%
Total Expenses:	\$ 574,741	83.4%
Managed Cash Flow:	\$ 114,639	16.6%

Executive Summary materials and Proforma were derived from documents provided by Seller and were prepared by FranBizNetwork to help prospective Buyers complete a summary review. These materials should not replace the Buyer's review of actual books and records and a thorough due diligence process. Buyers should not rely on these materials as definitive, but should instead consult the actual due diligence documents.