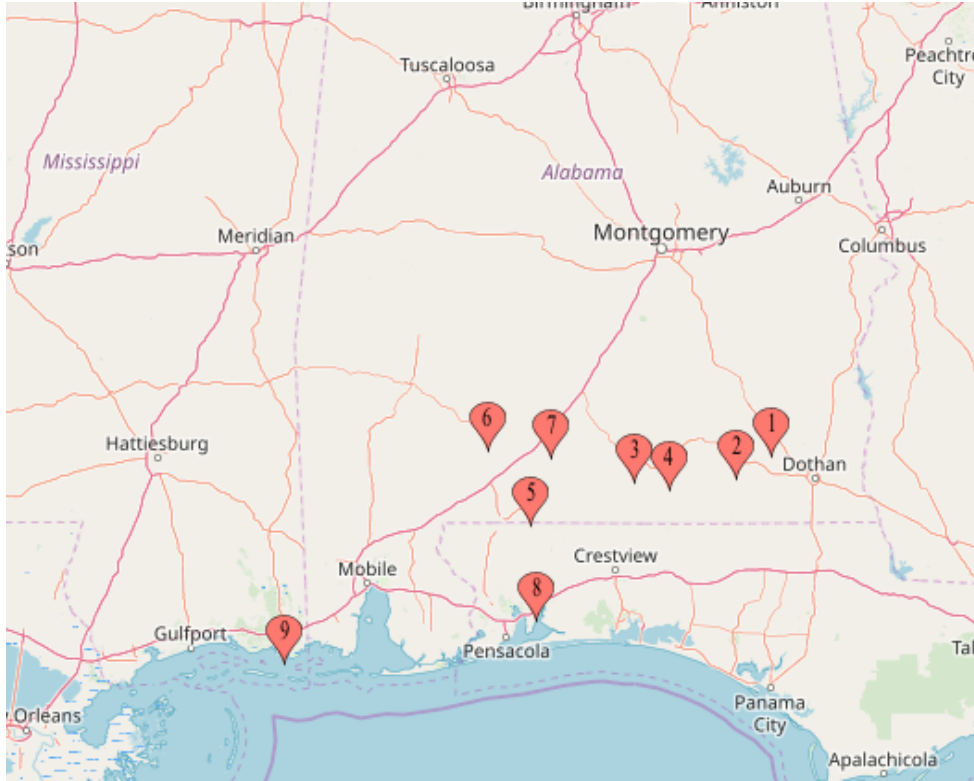




9 Church's Chicken - AL, MS, FL \$1,230,000 for package



Highlighted units have RE available.

Store Number	Location	2018 Sales (Extrapolated from P1-P8)	2018 Adj Net (Extrapolated from P1-P8)
1	1285 Ozark, AL	\$ 687,815	\$ 66,367
2	7311 Enterprise, AL	\$ 543,455	\$ (1,389)
3	10255 Andalusia, AL	\$ 824,569	\$ 102,300
4	10256 Opp, AL	\$ 679,653	\$ 44,918
5	1603 Brewton, AL	\$ 624,826	\$ (17,144)
6	3782 Monroeville, AL	\$ 936,044	\$ 139,774
7	3977 Evergreen, AL	\$ 719,782	\$ 42,252
8	1828 Milton, FL	\$ 1,030,440	\$ 114,413
9	1375 Moss point, MS	\$ 738,356	\$ 19,074
TOTAL		\$ 6,784,941	\$ 510,565
2% G&A			\$ 135,699
Post G&A Adj. Net (extrapolated)			\$ 374,867



	Ozark	Enterprise	Andalusia	Opp	Brewton	Monroeville	Evergreen	Milton	Moss Pt (Proforma)	TOTAL	%
YE 2017 P&L- Consolidated											
STORE SALES	\$693,395	\$542,774	\$922,310	\$648,548	\$604,194	\$926,156	\$711,671	\$1,078,490	\$884,000	\$7,011,536	100.0%
FOOD	\$221,276	\$176,233	\$299,774	\$208,287	\$201,005	\$292,441	\$219,536	\$327,801	\$265,200	\$2,211,553	31.5%
COST OF FOOD-DELIVERY	\$487	\$2,089	\$413	\$1,584	\$1,825	\$111	\$825	(\$578)		\$6,756	0.1%
FOOD COST	\$221,763	\$178,322	\$300,187	\$209,871	\$202,830	\$292,552	\$220,361	\$327,223	\$265,200	\$2,218,309	31.6%
FOOD VENDOR REBATES	\$ (10,731)	(\$12,040)	(\$11,308)	(\$11,621)	(\$10,967)	(\$11,631)	(\$10,614)	(\$10,430)		(\$89,341)	-1.3%
TOTAL FOOD COST	\$211,032	\$166,282	\$288,879	\$198,250	\$191,863	\$280,921	\$209,748	\$316,793	\$265,200	\$2,128,968	30.4%
PAPER COSTS	\$23,170	\$19,176	\$30,873	\$22,857	\$18,963	\$30,633	\$23,993	\$30,530	\$24,752	\$224,946	3.2%
TOTAL FOOD/PAPER	\$234,202	\$185,458	\$319,752	\$221,106	\$210,826	\$311,554	\$233,741	\$347,323	\$289,952	\$2,353,914	33.6%
LABOR CREW	\$121,118	\$101,262	\$170,876	\$95,793	\$119,838	\$161,396	\$88,375	\$219,065	\$221,000	\$1,298,721	18.5%
LABOR MANAGER	\$34,654	\$36,692	\$44,859	\$32,888	\$37,125	\$36,896	\$34,450	\$39,808		\$297,373	4.2%
OVERTIME-RESTAURANT	\$3,613	\$93	\$7,710	\$1,238	\$2,441	\$3,132	\$327	\$6,049		\$24,604	0.4%
REGULAR PAY-SHIFT MGR			\$15,091	\$15,669	\$363	\$12,576	\$47,224	\$2,928		\$93,852	1.3%
OVERTIME PAY-SHIFT MGR			\$1,319	\$101		\$627	\$1,771			\$3,818	0.1%
BONUS	\$1,900	\$800	\$250	\$1,575	\$425	\$1,775	\$1,850	\$1,125		\$9,700	0.1%
VACATION AND OTHER PAY	\$654		\$827		\$721		\$663			\$2,865	0.0%
LABOR COSTS BEFORE TAXES/WC	\$161,938	\$138,848	\$240,932	\$147,264	\$160,914	\$216,403	\$174,660	\$268,975	\$221,000	\$1,730,933	24.7%
PAYROLL TAXES	\$12,734	\$11,129	\$19,937	\$12,106	\$13,103	\$17,666	\$13,845	\$20,137	\$18,841	\$139,498	2.0%
WORKERS COMPENSATION	\$3,757	\$3,229	\$3,541	\$481	\$3,846	\$2,688	\$3,596	\$4,255	\$5,013	\$30,407	0.4%
TOTAL PAYROLL COST	\$178,430	\$153,206	\$264,411	\$159,851	\$177,862	\$236,757	\$192,101	\$293,366	\$244,853	\$1,900,838	27.1%
TOTAL COST OF GOODS SOLD	\$412,632	\$338,664	\$584,163	\$380,958	\$388,688	\$548,311	\$425,842	\$640,689	\$534,805	\$4,254,752	60.7%
GROSS MARGIN	\$280,763	\$204,109	\$338,147	\$267,590	\$215,506	\$377,844	\$285,829	\$437,801	\$349,195	\$2,756,784	39.3%
CONTROLLABLES											
TELEPHONE	\$2,824	\$2,877	\$2,369	\$2,683	\$2,143	\$3,441	\$3,127	\$2,381	\$3,448	\$25,292	0.4%
ELECTRIC	\$29,998	\$36,483	\$38,650	\$28,128	\$36,113	\$192	\$29,509	\$33,885	\$35,360	\$268,319	3.8%
GAS	\$5,104	\$6,006	\$8,056	\$4,752	\$3,157		\$5,163	\$4,599	\$5,304	\$42,141	0.6%
WATER	\$1,203	\$1,268	\$2,315	\$2,880	\$2,161	\$15	\$2,027	\$2,854	\$2,652	\$17,375	0.2%
WASTE REMOVAL	\$3,326	\$3,600	\$11,214	\$3,616	\$5,294	\$12,606	\$6,113	\$3,872	\$4,862	\$54,503	0.8%
REPAIRS/MAINTENANCE	\$15,482	\$14,831	\$20,252	\$20,806	\$20,853	\$522	\$17,002	\$30,034	\$13,260	\$153,041	2.2%
UNIFORMS	\$683	\$557	\$392	\$661	\$425	\$1,650	\$638	\$975	\$884	\$6,865	0.1%
POSTAGE	\$1,629	\$1,629	\$1,629	\$1,629	\$1,629	\$5,026	\$1,629	\$1,650	\$1,768	\$18,216	0.3%
CONTRACT SVCS	\$3,149	\$3,364	\$3,916	\$3,519	\$3,329	-\$239	\$3,794	\$3,090	\$5,304	\$29,225	0.4%
CASH (OVER)/SHORT	\$272	\$310	\$1,649	-\$209	-\$110		\$1,478	\$763	\$884	\$5,037	0.1%
MISC									\$64	\$64	0.0%
CRIME/CASUALTY				\$637						\$637	0.0%
SUPPLIES-OPERATING	\$13,813	\$15,114	\$19,235	\$17,658	\$17,529	\$16,740	\$16,503	\$30,404	\$20,332	\$167,328	2.4%
SUPPLIES-CLEANING			\$173	\$347					\$88	\$608	0.0%
SUPPLIES-PARTS									\$93	\$93	0.0%
SUPPLIES-SMALLWARES									\$75	\$75	0.0%
INTERNAL THEFT										\$0	0.0%
PAID OUTS	\$0		\$0	\$0	\$0	\$0	-\$11		\$811	\$799	0.0%
TOTAL CONTROLLABLE EXPENSES	\$77,483	\$86,038	\$109,850	\$87,106	\$92,522	\$39,953	\$86,971	\$114,506	\$95,189	\$789,617	11.3%
NON-CONTROLLABLES											
STORE RENT	33000	37,994.15	64,561.74	45,398.37	42,293.58	54,000.00	36,185.76	75,494.31	61,880.00	\$450,808	6.4%
PROPERTY TAXES	3156	4,780.05	1,737.17	1,551.91	2,413.32	752	1,590.06	64	2,652.00	\$18,697	0.3%
ROYALTIES	35190	27,658.92	46,624.19	32,942.16	30,754.59	46,987.51	35,794.43	54,447.84	44,200.00	\$354,600	5.1%
BANK CHARGES	2283	5,401.92	5,401.91	2,282.99	5,402.00	5,401.94	5,401.93	5,401.96	6188	\$43,166	0.6%
INSURANCE - P&C	6344	6,250.31	7,778.57	7,915.88	14,550.35	7,065.64	7,516.60	9,240.20	8,840.00	\$75,502	1.1%
INSURANCE - MEDICAL/EMPLOYEE	7062	4,615.35	7,681.00	6,277.47	8,626.82	3,961.29	5,093.35	3,871.73		\$47,189	0.7%
LICENSES	781	353	3,242.21	1,342.99	1,095.48	857	851	4,191.40	1,768.00	\$14,482	0.2%
DONATIONS	13	3		248			125		64	\$453	0.0%
A/P SUSPENSE	-4,317.83	-271.3	-1,618.81	-1,465.97	-213.13	-158.65	-158.65	-93.61		-\$8,298	-0.1%
CREDIT CARD FEES	6978	7,029.24	12,668.22	8,679.60	7,171.35	9,381.34	7,405.42	13,901.99	9,724.00	\$82,939	1.2%
AUTO AND TRUCK EXPENSE							40		265	\$305	0.0%
LATE FEES									1264	\$1,264	0.0%
FRANCHISE TAX									820	\$820	0.0%
PROFESSIONAL FEES	4261	4,261.44	4,261.44	4,261.44	4,186.52	4,531.52	4,251.52	4,608.24		\$34,624	0.5%
ADV - ADFUNDS	27736	21,711.14	46,102.82	32,422.16	30,234.59	41,820.89	29,983.33	48,535.19	41,548.00	\$320,094	4.6%
ADV - LOCAL (LSM)	370	370	2,320.11	731	4,725.51	4,453.31	4,668.11	6,280.47	2,210.00	\$26,129	0.4%
ADV - OTHER	-18.42	-18.42	-18.42	-18.41	-18.42	-18.42	-18.42	-18.42	88	-\$59	0.0%
TOTAL NON-CONTROLLABLE EXPENSE	\$122,838	\$120,138	\$200,742	\$142,569	\$151,223	\$179,036	\$138,730	\$225,926	\$181,511	\$1,462,713	20.9%
TOTAL OPERATING EXPENSES	\$200,321	\$206,176	\$310,592	\$229,675	\$243,744	\$218,988	\$225,700	\$340,432	\$276,700	\$2,252,330	32.1%
TOTAL OPERATING INCOME/(LOSS)	\$80,442	-\$2,067	\$27,555	\$37,915	-\$28,238	\$158,856	\$60,128	\$97,369	\$72,495	\$504,454	7.2%
Recast Bank charges to \$600	\$1,683	\$4,802	\$4,802	\$1,683	\$4,802	\$4,802	\$4,802	\$4,802	\$5,588	\$37,766	0.5%
Add back Prof Fees	\$4,261	\$4,261	\$4,261	\$4,261	\$4,187	\$4,532	\$4,252	\$4,608	\$0	\$34,624	0.5%
G&A- 2%	(13,868)	(10,855)	(18,446)	(12,971)	(12,084)	(18,523)	(14,233)	(21,570)	(17,680)	(140,231)	-2.0%
Total Post G&A EBITDA	72,519	(3,859)	18,172	30,888	(31,334)	149,666	54,948	85,209	60,403	436,613	6.2%



CONFIDENTIAL Executive Summary



Church's Chicken #1285
1164 Andrews Ave.
Ozark, AL 36360



Franchise Information:

Founded in San Antonio, TX, Church's Chicken, is one of the largest chicken restaurant chains in the world, with over 1,650 locations in 29 states and 23 global markets. The chain is now headquartered in Atlanta, GA. Franchisor requires prospective franchisees have sufficient net worth and liquidity to consummate the transaction, finance remodels, and possibly develop more locations. Restaurant management experience or related business experience required.

Franchise Agreement Expiration: 6/16/2037
Royalty: 5.0%
Remodel Requirements: \$70,000

Transfer Fee: \$5,000
Advertising: 4.0%

Training Location: Near buyer
Training Period: 8 weeks

Lease Information:

Monthly Base Rent: \$2,750
Percentage Rent: None
Expiration: TBD

Options: TBD
CAM: None
Monthly Property Tax: \$263

Security Deposit: TBD
Real Property Available: No
Increases: TBD

Location Details:

Business Established: TBD
Owner Since: 3/25/2011
Hours of Operation: Su-Th 10a-10p, F-Sa 10a-11p

Building Type: Freestanding with drive-thru
Seating: 34
Licenses Needed: Business, Health

Building Size: 1699 SF
Employees: Approx 15
Equipment Value: \$200,000

This store is located on E. Andrews Ave near the intersection of Highway 231. There are many restaurants at this intersection including Burger King, McDonald's and Hardee's. The four stores are within 60 miles and a little over an hour of each other.

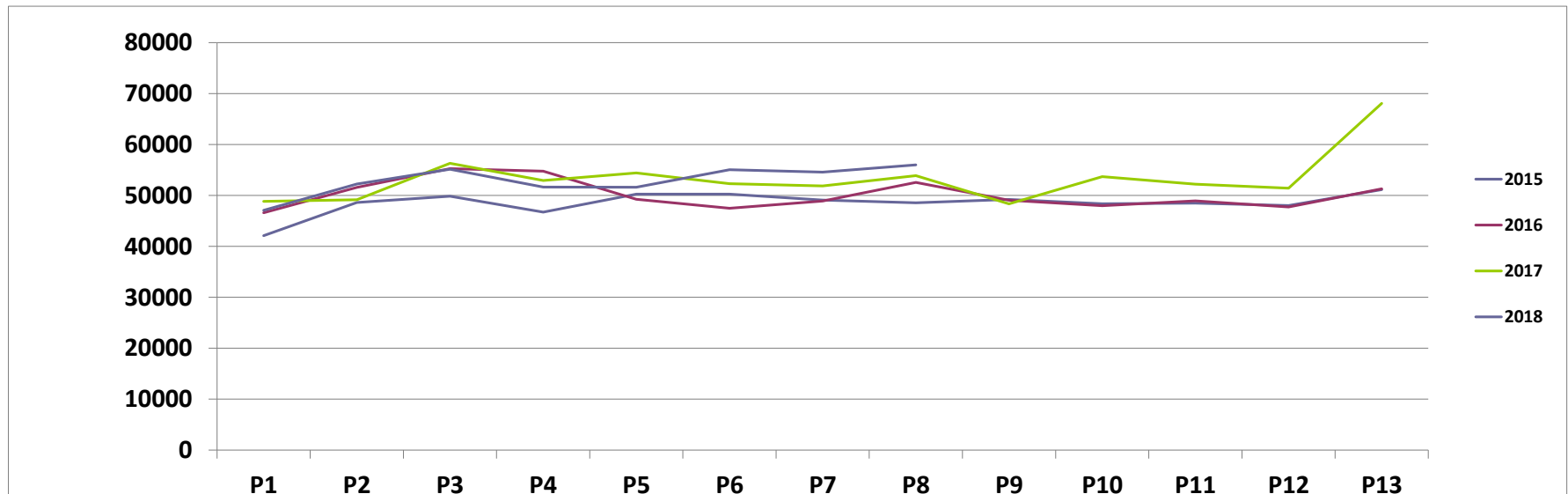
Remember you have agreed to keep all FranBizNetwork listings confidential.

As a part of the due diligence process you are encouraged to contact other franchisees with questions about the brand, but remember you are bound by a confidentiality agreement and cannot share the location or any details about the business you are considering buying. Please direct any questions you might have for the Seller to your FranBizNetwork agent. Feel free to visit the location(s) as a customer, but be discreet and do not ask questions of employees, managers, or other customers. Please do not draw unnecessary attention to yourself, as rumors of a pending sale can hurt the business.

SALES BY PERIOD

Church's Chicken #1285

	P1	P2	P3	P4	P5	P6	P7	P8	P9	P10	P11	P12	P13	TOTAL
2015	\$42,095	\$48,618	\$49,847	\$46,711	\$50,266	\$50,245	\$49,100	\$48,554	\$49,196	\$48,370	\$48,500	\$48,002	\$51,135	\$630,637
2016	\$46,596	\$51,582	\$55,259	\$54,756	\$49,238	\$47,486	\$48,909	\$52,543	\$49,047	\$47,977	\$48,928	\$47,731	\$51,306	\$651,357
\$ +/-	\$4,501	\$2,964	\$5,413	\$8,045	(\$1,028)	(\$2,759)	(\$191)	\$3,990	(\$149)	(\$393)	\$428	(\$271)	\$171	\$20,720
% +/-	11%	6%	11%	17%	-2%	-5%	0%	8%	0%	-1%	1%	-1%	0%	3%
2016	\$46,596	\$51,582	\$55,259	\$54,756	\$49,238	\$47,486	\$48,909	\$52,543	\$49,047	\$47,977	\$48,928	\$47,731	\$51,306	\$651,357
2017	\$48,836	\$49,152	\$56,304	\$52,922	\$54,402	\$52,313	\$51,859	\$53,864	\$48,343	\$53,696	\$52,208	\$51,429	\$68,067	\$693,395
\$ +/-	\$2,241	(\$2,430)	\$1,044	(\$1,834)	\$5,165	\$4,827	\$2,949	\$1,321	(\$703)	\$5,719	\$3,280	\$3,698	\$16,761	\$42,037
% +/-	5%	-5%	2%	-3%	10%	10%	6%	3%	-1%	12%	7%	8%	33%	6%
2017	\$48,836	\$49,152	\$56,304	\$52,922	\$54,402	\$52,313	\$51,859	\$53,864	\$48,343	\$53,696	\$52,208	\$51,429	\$68,067	\$693,395
2018	\$47,075	\$52,237	\$55,138	\$51,632	\$51,593	\$55,031	\$54,571	\$55,994	\$0	\$0	\$0	\$0	\$0	\$423,271
\$ +/-	(\$1,761)	\$3,085	(\$1,166)	(\$1,290)	(\$2,809)	\$2,718	\$2,712	\$2,130						\$3,620
% +/-	-4%	6%	-2%	-2%	-5%	5%	5%	4%						1%





CONFIDENTIAL Executive Summary



Church's Chicken #7311
1106 Boll Weevil Cir.
Enterprise, AL 36330



Franchise Information:

Founded in San Antonio, TX, Church's Chicken, is one of the largest chicken restaurant chains in the world, with over 1,650 locations in 29 states and 23 global markets. The chain is now headquartered in Atlanta, GA. Franchisor requires prospective franchisees have sufficient net worth and liquidity to consummate the transaction, finance remodels, and possibly develop more locations. Restaurant management experience or related business experience required.

Franchise Agreement Expiration: 9/19/2022

Royalty: 5.0%

Remodel Requirements: \$70,000

Transfer Fee: \$5,000

Advertising: 4.0%

Training Location: Near buyer

Training Period: 8 weeks

Lease Information:

Monthly Base Rent: None

Percentage Rent: 7% of sales

Expiration: 15 years

Options: 5 yr

CAM: None

Monthly Property Tax: \$398

Security Deposit: \$3,166

Real Property Available: Yes

Increases: 2% annually

Location Details:

Business Established: TBD

Owner Since: 3/25/2011

Hours of Operation: Su-Th 10a-10p, F-Sa 10a-11p

Building Type: Freestanding with drive-thru

Seating: 40

Licenses Needed: Business, health

Building Size: 2014 SF

Employees: Approx 15

Equipment Value: \$200,000

Nearby competition includes Subway, and several other restaurants. There is a Lowe's in the vicinity. The four stores are within 60 miles and a little over an hour of each other. This location is owned by seller.

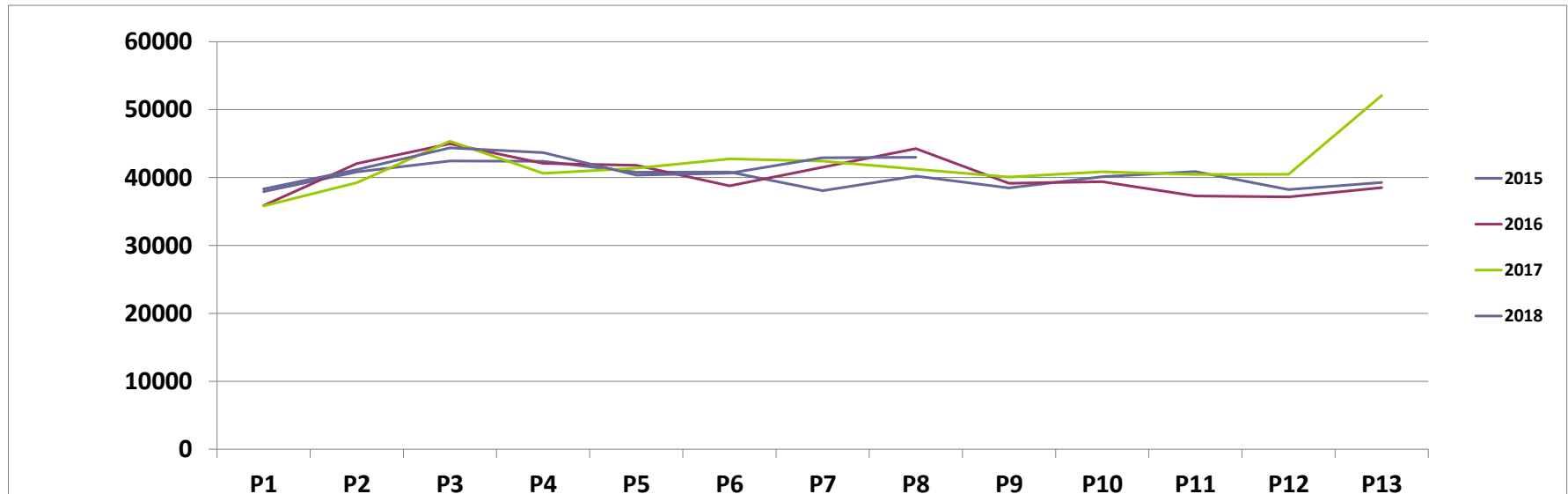
Remember you have agreed to keep all FranBizNetwork listings confidential.

As a part of the due diligence process you are encouraged to contact other franchisees with questions about the brand, but remember you are bound by a confidentiality agreement and cannot share the location or any details about the business you are considering buying. Please direct any questions you might have for the Seller to your FranBizNetwork agent. Feel free to visit the location(s) as a customer, but be discreet and do not ask questions of employees, managers, or other customers. Please do not draw unnecessary attention to yourself, as rumors of a pending sale can hurt the business.

SALES BY PERIOD

Church's Chicken #7311

	P1	P2	P3	P4	P5	P6	P7	P8	P9	P10	P11	P12	P13	TOTAL
2015	\$37,934	\$40,829	\$42,445	\$42,389	\$40,786	\$40,801	\$38,076	\$40,217	\$38,463	\$40,126	\$40,890	\$38,237	\$39,264	\$520,458
2016	\$35,880	\$42,064	\$44,983	\$42,087	\$41,815	\$38,775	\$41,510	\$44,255	\$39,144	\$39,394	\$37,285	\$37,140	\$38,506	\$522,837
\$ +/-	(\$2,054)	\$1,235	\$2,538	(\$302)	\$1,029	(\$2,026)	\$3,434	\$4,039	\$680	(\$732)	(\$3,604)	(\$1,098)	(\$759)	\$2,379
% +/-	-5%	3%	6%	-1%	3%	-5%	9%	10%	2%	-2%	-9%	-3%	-2%	0%
2016	\$35,880	\$42,064	\$44,983	\$42,087	\$41,815	\$38,775	\$41,510	\$44,255	\$39,144	\$39,394	\$37,285	\$37,140	\$38,506	\$522,837
2017	\$35,818	\$39,256	\$45,343	\$40,610	\$41,380	\$42,761	\$42,431	\$41,227	\$40,073	\$40,856	\$40,455	\$40,479	\$52,086	\$542,774
\$ +/-	(\$61)	(\$2,809)	\$360	(\$1,477)	(\$435)	\$3,986	\$921	(\$3,029)	\$930	\$1,462	\$3,169	\$3,339	\$13,580	\$19,937
% +/-	0%	-7%	1%	-4%	-1%	10%	2%	-7%	2%	4%	8%	9%	35%	4%
2017	\$35,818	\$39,256	\$45,343	\$40,610	\$41,380	\$42,761	\$42,431	\$41,227	\$40,073	\$40,856	\$40,455	\$40,479	\$52,086	\$542,774
2018	\$38,319	\$41,163	\$44,373	\$43,676	\$40,363	\$40,640	\$42,923	\$42,978	\$0	\$0	\$0	\$0	\$0	\$334,435
\$ +/-	\$2,501	\$1,907	(\$970)	\$3,066	(\$1,017)	(\$2,121)	\$492	\$1,751						\$5,610
% +/-	7%	5%	-2%	8%	-2%	-5%	1%	4%						2%





CONFIDENTIAL Executive Summary



Church's Chicken #10255
1518 E. 3 Notch St.
Andalusia, AL 36420



Franchise Information:

Founded in San Antonio, TX, Church's Chicken, is one of the largest chicken restaurant chains in the world, with over 1,650 locations in 29 states and 23 global markets. The chain is now headquartered in Atlanta, GA. Franchisor requires prospective franchisees have sufficient net worth and liquidity to consummate the transaction, finance remodels, and possibly develop more locations. Restaurant management experience or related business experience required.

Franchise Agreement Expiration: 6/9/2016
Royalty: 5.0%
Remodel Requirements: \$70,000

Transfer Fee: \$5,000
Advertising: 5.0%

Training Location: Near buyer
Training Period: 8 weeks

Lease Information:

Monthly Base Rent: None
Percentage Rent: 7% of sales
Expiration: 15 years

Options: 5 yr
CAM: None
Monthly Property Tax: \$145

Security Deposit: \$5,380
Real Property Available: Yes
Increases: 2% annually

Location Details:

Business Established: TBD
Owner Since: 3/25/2011
Hours of Operation: Su-Th 10a-10p, F-Sa 10a-11p

Building Type: Freestanding with drive-thru
Seating: 24
Licenses Needed: Business, health

Building Size: 1694 SF
Employees: Approx 15
Equipment Value: \$200,000

This store is located on E. 3 Notch Street near the intersection of Bypass Road. There is a Piggly Wiggly close by, as well as a Walmart Supercenter. Nearby competition includes Captain D's and Domino's. The four stores are within 60 miles and a little over an hour of each other. This location is owned by seller.

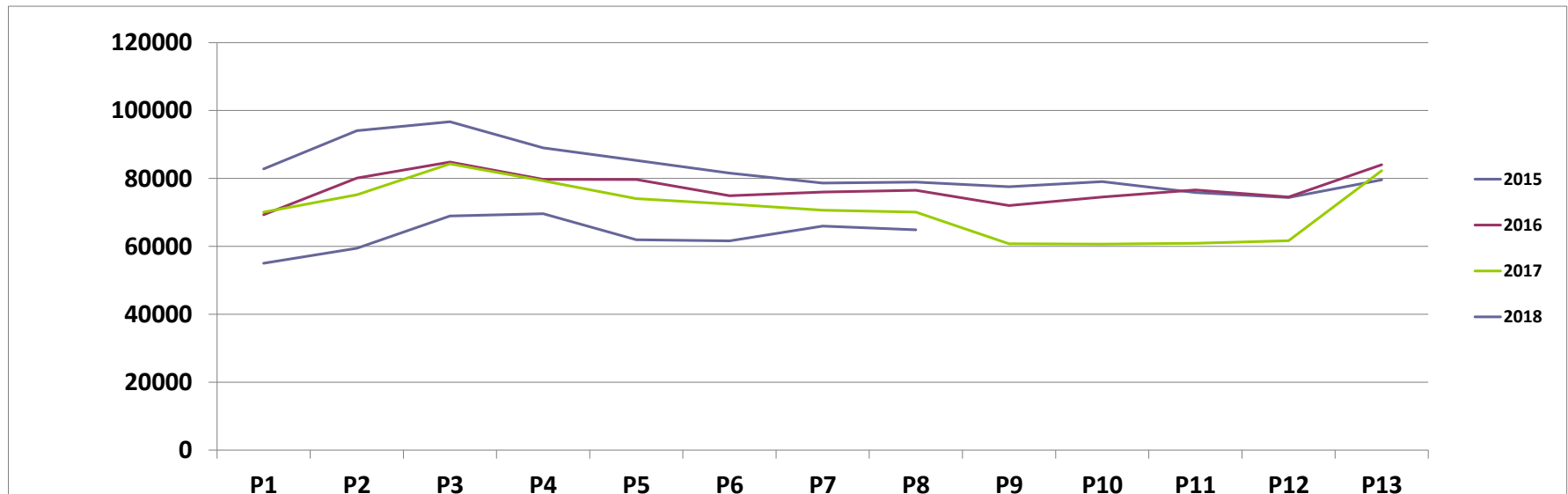
Remember you have agreed to keep all FranBizNetwork listings confidential.

As a part of the due diligence process you are encouraged to contact other franchisees with questions about the brand, but remember you are bound by a confidentiality agreement and cannot share the location or any details about the business you are considering buying. Please direct any questions you might have for the Seller to your FranBizNetwork agent. Feel free to visit the location(s) as a customer, but be discreet and do not ask questions of employees, managers, or other customers. Please do not draw unnecessary attention to yourself, as rumors of a pending sale can hurt the business.

SALES BY PERIOD

Church's Chicken #10255

	P1	P2	P3	P4	P5	P6	P7	P8	P9	P10	P11	P12	P13	TOTAL
2015	\$82,811	\$94,054	\$96,701	\$88,985	\$85,309	\$81,586	\$78,655	\$78,929	\$77,574	\$79,063	\$75,826	\$74,374	\$79,610	\$1,073,476
2016	\$69,314	\$80,107	\$84,823	\$79,746	\$79,686	\$74,912	\$75,976	\$76,534	\$72,019	\$74,525	\$76,618	\$74,506	\$84,026	\$1,002,790
\$ +/-	(\$13,498)	(\$13,947)	(\$11,878)	(\$9,239)	(\$5,623)	(\$6,675)	(\$2,679)	(\$2,394)	(\$5,556)	(\$4,538)	\$791	\$132	\$4,416	(\$70,686)
% +/-	-16%	-15%	-12%	-10%	-7%	-8%	-3%	-3%	-7%	-6%	1%	0%	6%	-7%
2016	\$69,314	\$80,107	\$84,823	\$79,746	\$79,686	\$74,912	\$75,976	\$76,534	\$72,019	\$74,525	\$76,618	\$74,506	\$84,026	\$1,002,790
2017	\$70,078	\$75,167	\$84,289	\$79,299	\$74,059	\$72,422	\$70,654	\$70,095	\$60,765	\$60,658	\$60,881	\$61,675	\$82,267	\$922,311
\$ +/-	\$765	(\$4,939)	(\$534)	(\$447)	(\$5,627)	(\$2,489)	(\$5,322)	(\$6,440)	(\$11,253)	(\$13,867)	(\$15,736)	(\$12,831)	(\$1,759)	(\$80,479)
% +/-	1%	-6%	-1%	-1%	-7%	-3%	-7%	-8%	-16%	-19%	-21%	-17%	-2%	-8%
2017	\$70,078	\$75,167	\$84,289	\$79,299	\$74,059	\$72,422	\$70,654	\$70,095	\$60,765	\$60,658	\$60,881	\$61,675	\$82,267	\$922,311
2018	\$55,025	\$59,413	\$68,963	\$69,612	\$61,964	\$61,601	\$65,976	\$64,874	\$0	\$0	\$0	\$0	\$0	\$507,428
\$ +/-	(\$15,053)	(\$15,754)	(\$15,326)	(\$9,687)	(\$12,095)	(\$10,821)	(\$4,678)	(\$5,221)						(\$88,636)
% +/-	-21%	-21%	-18%	-12%	-16%	-15%	-7%	-7%						-15%





CONFIDENTIAL Executive Summary



Church's Chicken #10256
805 E. Cumming Dr.
Opp, AL 36467



Franchise Information:

Founded in San Antonio, TX, Church's Chicken, is one of the largest chicken restaurant chains in the world, with over 1,650 locations in 29 states and 23 global markets. The chain is now headquartered in Atlanta, GA. Franchisor requires prospective franchisees have sufficient net worth and liquidity to consummate the transaction, finance remodels, and possibly develop more locations. Restaurant management experience or related business experience required.

Franchise Agreement Expiration: 7/20/2026

Transfer Fee: \$5,000

Training Location: Near Buyer

Royalty: 5.0%

Advertising: 5.0%

Training Period: 8 weeks

Remodel Requirements: \$70,000

Lease Information:

Monthly Base Rent: None

Options: 5 yr

Security Deposit: \$3,783

Percentage Rent: 7% of sales

CAM: None

Real Property Available: Yes

Expiration: 15 years

Monthly Property Tax: \$129

Increases: 2% annually

Location Details:

Business Established: TBD

Building Type: Freestanding with drive-thru

Building Size: 1549 SF

Owner Since: 3/25/2011

Seating: 48

Employees: Approx 15

Hours of Operation: Su-Th 10a-10p, F-Sa 10a-11p

Licenses Needed: Business, health

Equipment Value: \$200,000

Nearby competition includes Hook's Bar-B-Q, Burger King, Rancho Grande Grill, Hardee's, Country Kitchen and Howard's Cafe. The four stores are within 60 miles and a little over an hour of each other. This location is owned by seller.

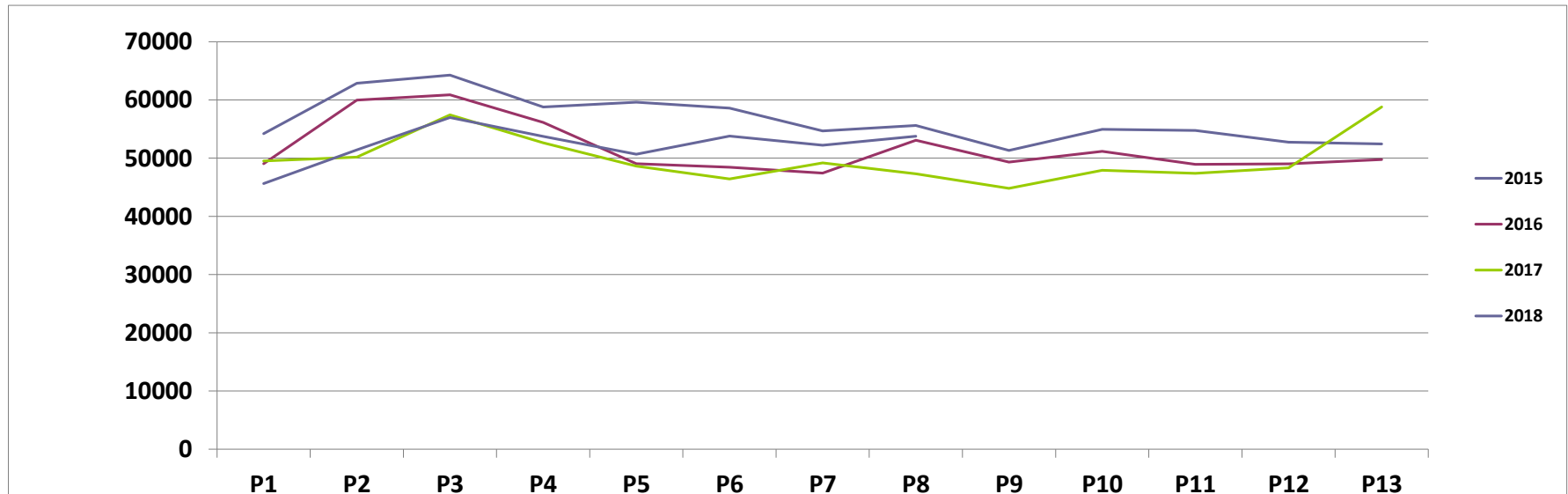
Remember you have agreed to keep all FranBizNetwork listings confidential.

As a part of the due diligence process you are encouraged to contact other franchisees with questions about the brand, but remember you are bound by a confidentiality agreement and cannot share the location or any details about the business you are considering buying. Please direct any questions you might have for the Seller to your FranBizNetwork agent. Feel free to visit the location(s) as a customer, but be discreet and do not ask questions of employees, managers, or other customers. Please do not draw unnecessary attention to yourself, as rumors of a pending sale can hurt the business.

SALES BY PERIOD

Church's Chicken #10256

	P1	P2	P3	P4	P5	P6	P7	P8	P9	P10	P11	P12	P13	TOTAL
2015	\$54,197	\$62,880	\$64,267	\$58,801	\$59,623	\$58,584	\$54,677	\$55,628	\$51,324	\$54,952	\$54,747	\$52,739	\$52,437	\$734,855
2016	\$49,048	\$59,981	\$60,880	\$56,130	\$49,059	\$48,450	\$47,432	\$53,085	\$49,319	\$51,164	\$48,942	\$49,007	\$49,769	\$672,265
\$ +/-	(\$5,149)	(\$2,899)	(\$3,387)	(\$2,671)	(\$10,564)	(\$10,134)	(\$7,245)	(\$2,543)	(\$2,005)	(\$3,789)	(\$5,805)	(\$3,731)	(\$2,668)	(\$62,589)
% +/-	-9%	-5%	-5%	-5%	-18%	-17%	-13%	-5%	-4%	-7%	-11%	-7%	-5%	-9%
2016	\$49,048	\$59,981	\$60,880	\$56,130	\$49,059	\$48,450	\$47,432	\$53,085	\$49,319	\$51,164	\$48,942	\$49,007	\$49,769	\$672,265
2017	\$49,509	\$50,170	\$57,435	\$52,628	\$48,634	\$46,437	\$49,183	\$47,297	\$44,814	\$47,925	\$47,399	\$48,317	\$58,801	\$648,548
\$ +/-	\$461	(\$9,811)	(\$3,445)	(\$3,501)	(\$425)	(\$2,013)	\$1,751	(\$5,788)	(\$4,505)	(\$3,239)	(\$1,543)	(\$690)	\$9,032	(\$23,717)
% +/-	1%	-16%	-6%	-6%	-1%	-4%	4%	-11%	-9%	-6%	-3%	-1%	18%	-4%
2017	\$49,509	\$50,170	\$57,435	\$52,628	\$48,634	\$46,437	\$49,183	\$47,297	\$44,814	\$47,925	\$47,399	\$48,317	\$58,801	\$648,548
2018	\$45,637	\$51,422	\$56,981	\$53,727	\$50,682	\$53,794	\$52,234	\$53,771	\$0	\$0	\$0	\$0	\$0	\$418,248
\$ +/-	(\$3,872)	\$1,252	(\$454)	\$1,099	\$2,048	\$7,357	\$3,051	\$6,474						\$16,955
% +/-	-8%	2%	-1%	2%	4%	16%	6%	14%						4%





CONFIDENTIAL Executive Summary



Church's Chicken #1603
90 South Blvd.
Brewton, AL 36426



Franchise Information:

Founded in San Antonio, TX, Church's Chicken, is one of the largest chicken restaurant chains in the world, with over 1,650 locations in 29 states and 23 global markets. The chain is now headquartered in Atlanta, GA. Franchisor requires prospective franchisees have sufficient net worth and liquidity to consummate the transaction, finance remodels, and possibly develop more locations. Restaurant management experience or related business experience required.

Franchise Agreement Expiration: 12/4/2019

Transfer Fee: \$5,000

Training Location: Near buyer

Royalty: 5.0%

Advertising: 5.0%

Training Period: 8 weeks

Remodel Requirements: \$70,000

Lease Information:

Monthly Base Rent: \$3,525

Options: 5 yr

Security Deposit: \$3,525

Percentage Rent: None

CAM: TBD

Real Property Available: Yes

Expiration: 15 years

Monthly Property Tax: \$201

Increases: None

Location Details:

Business Established: TBD

Building Type: Freestanding with drive-thru

Building Size: 1373 SF

Owner Since: 3/25/2011

Seating: 6

Employees: Approx 15

Hours of Operation: Su-Th 10a-10p, F-Sa 10a-11p

Licenses Needed: Business, Health

Equipment Value: \$200,000

Located next to a park and a manufacturing facility, nearby competition includes Arby's, McDonald's, Popeyes, Pizza Hut, Camp 31 BBQ. The three stores in this package are located within about 37 miles and 43 minutes of each other. This location is owned by seller.

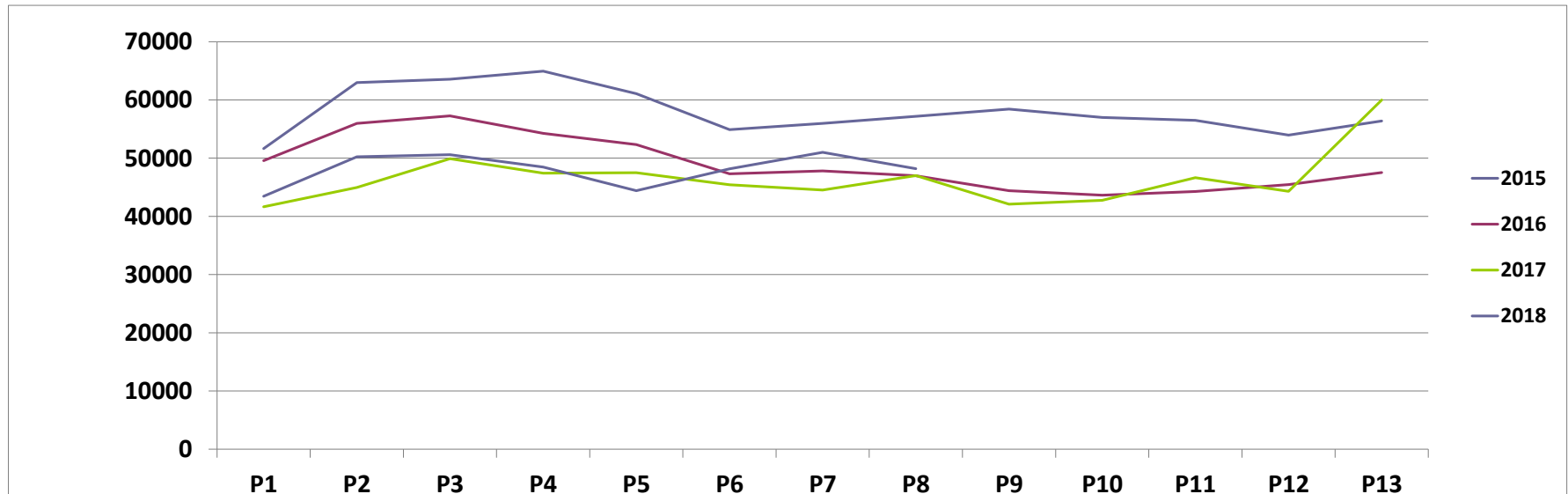
Remember you have agreed to keep all FranBizNetwork listings confidential.

As a part of the due diligence process you are encouraged to contact other franchisees with questions about the brand, but remember you are bound by a confidentiality agreement and cannot share the location or any details about the business you are considering buying. Please direct any questions you might have for the Seller to your FranBizNetwork agent. Feel free to visit the location(s) as a customer, but be discreet and do not ask questions of employees, managers, or other customers. Please do not draw unnecessary attention to yourself, as rumors of a pending sale can hurt the business.

SALES BY PERIOD

Church's Chicken #1603

	P1	P2	P3	P4	P5	P6	P7	P8	P9	P10	P11	P12	P13	TOTAL
2015	\$51,642	\$62,988	\$63,571	\$64,945	\$61,088	\$54,907	\$55,975	\$57,199	\$58,443	\$56,992	\$56,510	\$53,948	\$56,383	\$754,589
2016	\$49,575	\$55,974	\$57,261	\$54,269	\$52,318	\$47,317	\$47,807	\$46,987	\$44,410	\$43,634	\$44,275	\$45,454	\$47,519	\$636,800
\$ +/-	(\$2,066)	(\$7,014)	(\$6,310)	(\$10,676)	(\$8,770)	(\$7,590)	(\$8,168)	(\$10,212)	(\$14,033)	(\$13,358)	(\$12,235)	(\$8,494)	(\$8,864)	(\$117,789)
% +/-	-4%	-11%	-10%	-16%	-14%	-14%	-15%	-18%	-24%	-23%	-22%	-16%	-16%	-16%
2016	\$49,575	\$55,974	\$57,261	\$54,269	\$52,318	\$47,317	\$47,807	\$46,987	\$44,410	\$43,634	\$44,275	\$45,454	\$47,519	\$636,800
2017	\$41,646	\$44,974	\$49,908	\$47,421	\$47,497	\$45,435	\$44,515	\$47,005	\$42,101	\$42,750	\$46,658	\$44,292	\$59,992	\$604,194
\$ +/-	(\$7,930)	(\$11,000)	(\$7,354)	(\$6,848)	(\$4,821)	(\$1,882)	(\$3,292)	\$18	(\$2,309)	(\$884)	\$2,383	(\$1,162)	\$12,473	(\$32,606)
% +/-	-16%	-20%	-13%	-13%	-9%	-4%	-7%	0%	-5%	-2%	5%	-3%	26%	-5%
2017	\$41,646	\$44,974	\$49,908	\$47,421	\$47,497	\$45,435	\$44,515	\$47,005	\$42,101	\$42,750	\$46,658	\$44,292	\$59,992	\$604,194
2018	\$43,455	\$50,235	\$50,602	\$48,463	\$44,400	\$48,157	\$51,002	\$48,195	\$0	\$0	\$0	\$0	\$0	\$384,508
\$ +/-	\$1,809	\$5,261	\$694	\$1,042	(\$3,097)	\$2,722	\$6,487	\$1,190						\$16,108
% +/-	4%	12%	1%	2%	-7%	6%	15%	3%						4%





CONFIDENTIAL Executive Summary



Church's Chicken #3782
2948 South Alabama Ave.
Monroeville, AL 36461



Franchise Information:

Founded in San Antonio, TX, Church's Chicken, is one of the largest chicken restaurant chains in the world, with over 1,650 locations in 29 states and 23 global markets. The chain is now headquartered in Atlanta, GA. Franchisor requires prospective franchisees have sufficient net worth and liquidity to consummate the transaction, finance remodels, and possibly develop more locations. Restaurant management experience or related business experience required.

Franchise Agreement Expiration: 11/30/2021

Transfer Fee: \$5,000

Training Location: Near Buyer

Royalty: 5.0%

Advertising: 4.5%

Training Period: 8 weeks

Remodel Requirements: \$70,000

Lease Information:

Monthly Base Rent: \$4,500

Options: 5 yr

Security Deposit: TBD

Percentage Rent: None

CAM: None

Real Property Available: No

Expiration: 11/30/2020

Monthly Property Tax: \$63

Increases: TBD

Location Details:

Business Established: TBD

Building Type: Attached to a gas station, with drive-thru

Building Size: 2810 SF

Owner Since: 3/25/2011

Seating: 8

Employees: Approx 15

Hours of Operation: Su-Th 10a-10p, F-Sa 10a-11p

Licenses Needed: Business, health

Equipment Value: \$200,000

This location with drive-thru, is attached to a Shell gas station. Located next to Walmart supercenter and a motel, nearby competition includes Papa John's Pizza and Sonic Drive-in. The three stores in this package are located within about 37 miles and 43 minutes of each other.

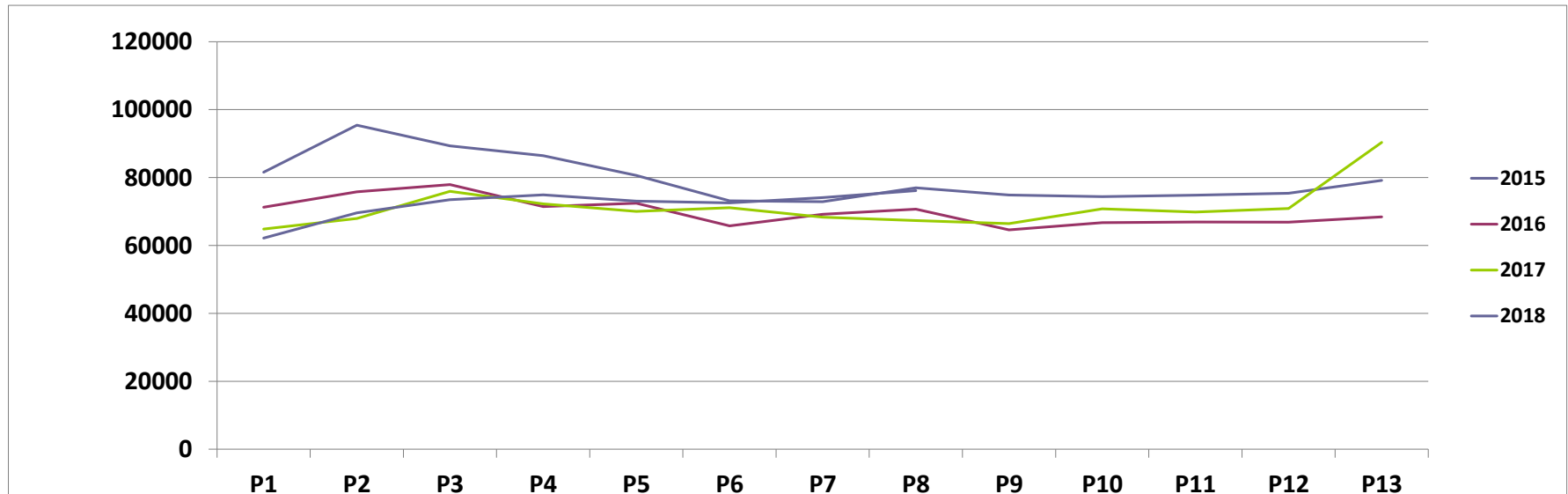
Remember you have agreed to keep all FranBizNetwork listings confidential.

As a part of the due diligence process you are encouraged to contact other franchisees with questions about the brand, but remember you are bound by a confidentiality agreement and cannot share the location or any details about the business you are considering buying. Please direct any questions you might have for the Seller to your FranBizNetwork agent. Feel free to visit the location(s) as a customer, but be discreet and do not ask questions of employees, managers, or other customers. Please do not draw unnecessary attention to yourself, as rumors of a pending sale can hurt the business.

SALES BY PERIOD

Church's Chicken #3782

	P1	P2	P3	P4	P5	P6	P7	P8	P9	P10	P11	P12	P13	TOTAL
2015	\$81,562	\$95,427	\$89,328	\$86,449	\$80,647	\$73,143	\$72,889	\$76,963	\$74,877	\$74,395	\$74,808	\$75,382	\$79,160	\$1,035,030
2016	\$71,255	\$75,818	\$77,931	\$71,458	\$72,437	\$65,776	\$69,167	\$70,709	\$64,592	\$66,726	\$66,911	\$66,846	\$68,417	\$908,042
\$ +/-	(\$10,306)	(\$19,609)	(\$11,397)	(\$14,991)	(\$8,210)	(\$7,367)	(\$3,722)	(\$6,254)	(\$10,285)	(\$7,668)	(\$7,897)	(\$8,537)	(\$10,744)	(\$126,988)
% +/-	-13%	-21%	-13%	-17%	-10%	-10%	-5%	-8%	-14%	-10%	-11%	-11%	-14%	-12%
2016	\$71,255	\$75,818	\$77,931	\$71,458	\$72,437	\$65,776	\$69,167	\$70,709	\$64,592	\$66,726	\$66,911	\$66,846	\$68,417	\$908,042
2017	\$64,828	\$67,952	\$75,967	\$72,272	\$70,014	\$71,118	\$68,317	\$67,328	\$66,450	\$70,804	\$69,848	\$70,906	\$90,352	\$926,156
\$ +/-	(\$6,427)	(\$7,866)	(\$1,963)	\$814	(\$2,423)	\$5,342	(\$850)	(\$3,381)	\$1,858	\$4,077	\$2,937	\$4,060	\$21,936	\$18,114
% +/-	-9%	-10%	-3%	1%	-3%	8%	-1%	-5%	3%	6%	4%	6%	32%	2%
2017	\$64,828	\$67,952	\$75,967	\$72,272	\$70,014	\$71,118	\$68,317	\$67,328	\$66,450	\$70,804	\$69,848	\$70,906	\$90,352	\$926,156
2018	\$62,169	\$69,613	\$73,501	\$74,896	\$73,077	\$72,531	\$74,098	\$76,142	\$0	\$0	\$0	\$0	\$0	\$576,028
\$ +/-	(\$2,659)	\$1,661	(\$2,466)	\$2,624	\$3,063	\$1,413	\$5,781	\$8,814						\$18,232
% +/-	-4%	2%	-3%	4%	4%	2%	8%	13%						3%





CONFIDENTIAL Executive Summary



Church's Chicken #3977
312 East Front St.
Evergreen, AL 36401



Franchise Information:

Founded in San Antonio, TX, Church's Chicken, is one of the largest chicken restaurant chains in the world, with over 1,650 locations in 29 states and 23 global markets. The chain is now headquartered in Atlanta, GA. Franchisor requires prospective franchisees have sufficient net worth and liquidity to consummate the transaction, finance remodels, and possibly develop more locations. Restaurant management experience or related business experience required.

Franchise Agreement Expiration: 9/10/2026
Royalty: 5.0%
Remodel Requirements: \$70,000

Transfer Fee: \$5,000
Advertising: 4.3%

Training Location: Near buyer
Training Period: 8 weeks

Lease Information:

Monthly Base Rent: \$3,015
Percentage Rent: None
Expiration: 3/25/2021

Options: 10 yrs
CAM: None
Monthly Property Tax: \$133

Security Deposit: TBD
Real Property Available: No
Increases: TBD

Location Details:

Business Established: TBD
Owner Since: 3/25/2011
Hours of Operation: Su-Th 10a-10p, F-Sa 10a-11p

Building Type: Freestanding with drive-thru
Seating: 19
Licenses Needed: Business, health

Building Size: TBD
Employees: Approx 15
Equipment Value: \$200,000

Located on a front pad site in a shopping center anchored by Piggly Wiggly, nearby restaurants include Sweet P's Diner, Gray's Crazy Italian Pizza, Waffle House. The three stores in this package are located within about 37 miles and 43 minutes of each other.

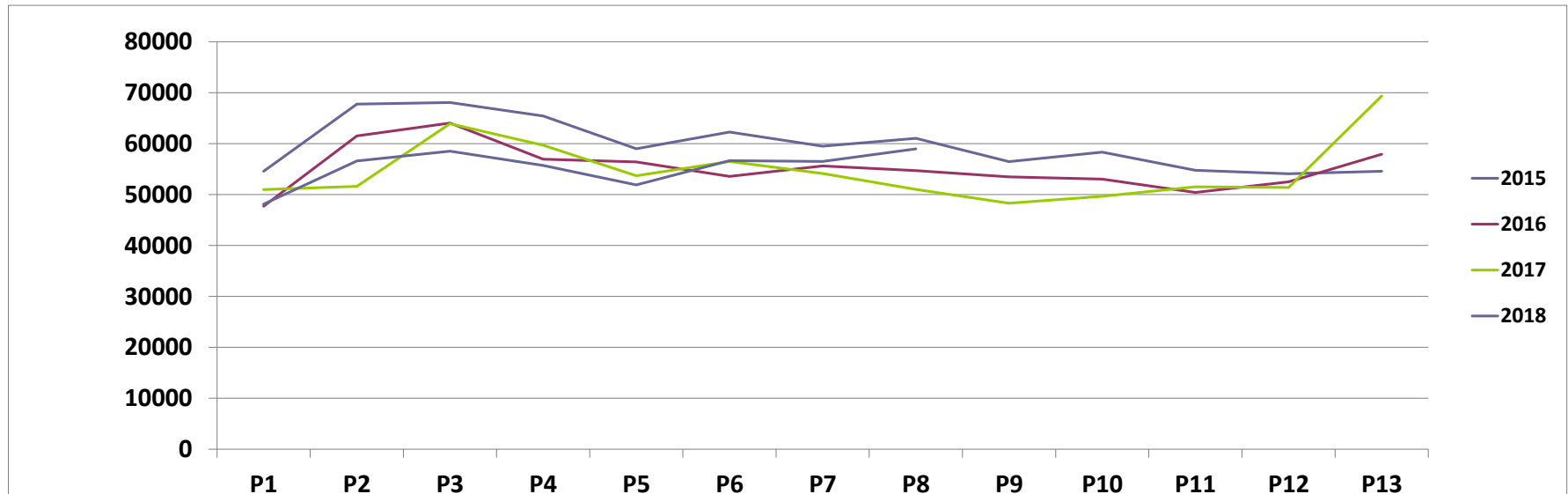
Remember you have agreed to keep all FranBizNetwork listings confidential.

As a part of the due diligence process you are encouraged to contact other franchisees with questions about the brand, but remember you are bound by a confidentiality agreement and cannot share the location or any details about the business you are considering buying. Please direct any questions you might have for the Seller to your FranBizNetwork agent. Feel free to visit the location(s) as a customer, but be discreet and do not ask questions of employees, managers, or other customers. Please do not draw unnecessary attention to yourself, as rumors of a pending sale can hurt the business.

SALES BY PERIOD

Church's Chicken #3977

	P1	P2	P3	P4	P5	P6	P7	P8	P9	P10	P11	P12	P13	TOTAL
2015	\$54,581	\$67,767	\$68,068	\$65,420	\$58,988	\$62,265	\$59,506	\$61,022	\$56,467	\$58,324	\$54,775	\$54,079	\$54,584	\$775,846
2016	\$47,707	\$61,515	\$64,039	\$56,952	\$56,416	\$53,556	\$55,607	\$54,695	\$53,460	\$53,037	\$50,397	\$52,479	\$57,927	\$717,787
\$ +/-	(\$6,875)	(\$6,252)	(\$4,029)	(\$8,469)	(\$2,572)	(\$8,709)	(\$3,899)	(\$6,326)	(\$3,007)	(\$5,287)	(\$4,379)	(\$1,600)	\$3,343	(\$58,059)
% +/-	-13%	-9%	-6%	-13%	-4%	-14%	-7%	-10%	-5%	-9%	-8%	-3%	6%	-7%
2016	\$47,707	\$61,515	\$64,039	\$56,952	\$56,416	\$53,556	\$55,607	\$54,695	\$53,460	\$53,037	\$50,397	\$52,479	\$57,927	\$717,787
2017	\$50,983	\$51,597	\$63,896	\$59,690	\$53,687	\$56,490	\$54,120	\$50,996	\$48,291	\$49,647	\$51,523	\$51,397	\$69,355	\$711,671
\$ +/-	\$3,276	(\$9,918)	(\$143)	\$2,738	(\$2,729)	\$2,933	(\$1,487)	(\$3,699)	(\$5,168)	(\$3,390)	\$1,126	(\$1,082)	\$11,428	(\$6,117)
% +/-	7%	-16%	0%	5%	-5%	5%	-3%	-7%	-10%	-6%	2%	-2%	20%	-1%
2017	\$50,983	\$51,597	\$63,896	\$59,690	\$53,687	\$56,490	\$54,120	\$50,996	\$48,291	\$49,647	\$51,523	\$51,397	\$69,355	\$711,671
2018	\$48,123	\$56,605	\$58,528	\$55,698	\$51,878	\$56,657	\$56,490	\$58,965	\$0	\$0	\$0	\$0	\$0	\$442,943
\$ +/-	(\$2,860)	\$5,008	(\$5,368)	(\$3,992)	(\$1,809)	\$167	\$2,370	\$7,969						\$1,486
% +/-	-6%	10%	-8%	-7%	-3%	0%	4%	16%						0%





CONFIDENTIAL Executive Summary



Church's Chicken #1828

6584 Hwy 90
Milton, FL 32570



Franchise Information:

Founded in San Antonio, TX, Church's Chicken, is one of the largest chicken restaurant chains in the world, with over 1,650 locations in 29 states and 23 global markets. The chain is now headquartered in Atlanta, GA. Franchisor requires prospective franchisees have sufficient net worth and liquidity to consummate the transaction, finance remodels, and possibly develop more locations. Restaurant management experience or related business experience required.

Franchise Agreement Expiration: 5/22/2022

Transfer Fee: \$5,000

Training Location: Near buyer

Royalty: 5.0%

Advertising: 4.5%

Training Period: 8 weeks

Remodel Requirements: \$70,000

Lease Information:

Monthly Base Rent: \$6,291

Options: 5 yrs

Security Deposit: \$6,291

Percentage Rent: None

CAM: TBD

Real Property Available: Yes

Expiration: 15 years

Monthly Property Tax: \$5

Increases: 2% annually

Location Details:

Business Established: TBD

Building Type: Freestanding with drive-thru

Building Size: TBD

Owner Since: 3/25/2011

Seating: 40

Employees: Approx 15

Hours of Operation: Su-Th 10a-10p, F-Sa 10a-11p

Licenses Needed: Business, health

Equipment Value: \$200,000

Located on Hwy 90/Caroline St. near Six Flags Shopping Center, and the county courthouse. Nearby competition includes Burger King, Tastee Freeze, McDonald's, Wendy's, Little Caesars. This location is owned by seller.

Remember you have agreed to keep all FranBizNetwork listings confidential.

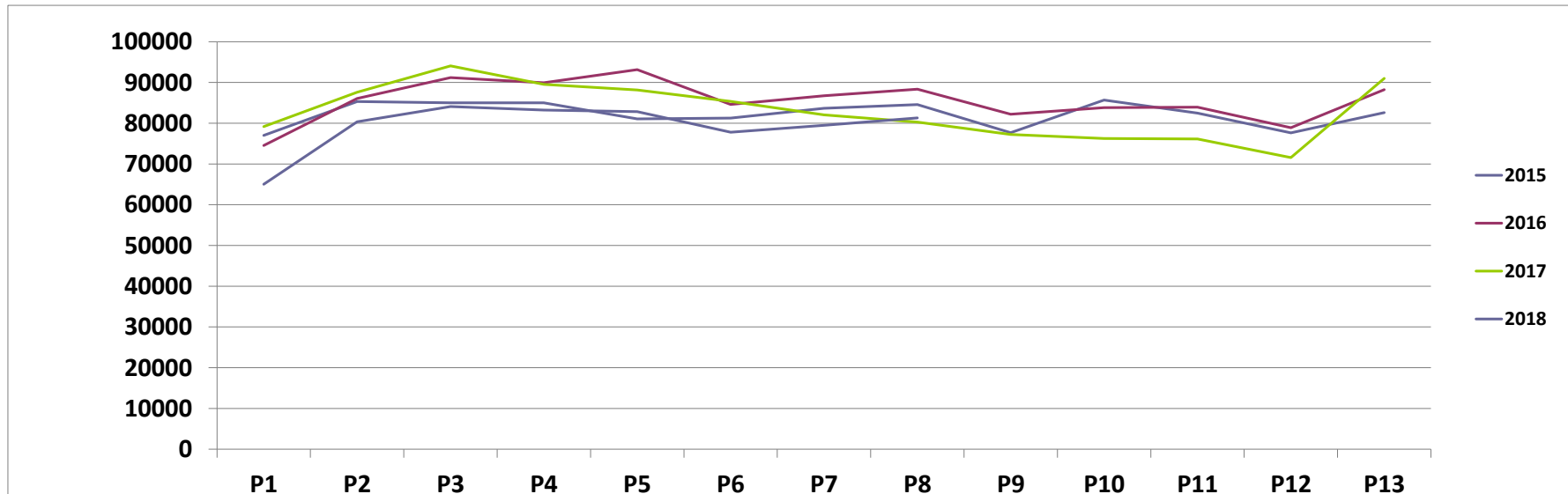
As a part of the due diligence process you are encouraged to contact other franchisees with questions about the brand, but remember you are bound by a confidentiality agreement and cannot share the location or any details about the business you are considering buying. Please direct any questions you might have for the Seller to your FranBizNetwork agent. Feel free to visit the location(s) as a customer, but be discreet and do not ask questions of employees, managers, or other customers. Please do not draw unnecessary attention to yourself, as rumors of a pending sale can hurt the business.



SALES BY PERIOD

Church's Chicken #1828

	P1	P2	P3	P4	P5	P6	P7	P8	P9	P10	P11	P12	P13	TOTAL
2015	\$77,016	\$85,338	\$85,010	\$85,018	\$81,085	\$81,253	\$83,665	\$84,575	\$77,666	\$85,689	\$82,486	\$77,624	\$82,614	\$1,069,038
2016	\$74,537	\$86,059	\$91,182	\$89,933	\$93,154	\$84,613	\$86,737	\$88,352	\$82,225	\$83,814	\$83,944	\$78,901	\$88,243	\$1,111,694
\$ +/-	(\$2,479)	\$721	\$6,172	\$4,915	\$12,070	\$3,360	\$3,072	\$3,777	\$4,560	(\$1,874)	\$1,458	\$1,277	\$5,629	\$42,656
% +/-	-3%	1%	7%	6%	15%	4%	4%	4%	6%	-2%	2%	2%	7%	4%
2016	\$74,537	\$86,059	\$91,182	\$89,933	\$93,154	\$84,613	\$86,737	\$88,352	\$82,225	\$83,814	\$83,944	\$78,901	\$88,243	\$1,111,694
2017	\$79,155	\$87,620	\$94,075	\$89,535	\$88,172	\$85,374	\$82,044	\$80,263	\$77,258	\$76,260	\$76,153	\$71,566	\$91,017	\$1,078,490
\$ +/-	\$4,618	\$1,561	\$2,893	(\$398)	(\$4,982)	\$761	(\$4,693)	(\$8,089)	(\$4,968)	(\$7,554)	(\$7,791)	(\$7,335)	\$2,774	(\$33,204)
% +/-	6%	2%	3%	0%	-5%	1%	-5%	-9%	-6%	-9%	-9%	-9%	3%	-3%
2017	\$79,155	\$87,620	\$94,075	\$89,535	\$88,172	\$85,374	\$82,044	\$80,263	\$77,258	\$76,260	\$76,153	\$71,566	\$91,017	\$1,078,490
2018	\$65,021	\$80,375	\$84,091	\$83,224	\$82,834	\$77,797	\$79,477	\$81,299	\$0	\$0	\$0	\$0	\$0	\$634,118
\$ +/-	(\$14,135)	(\$7,245)	(\$9,983)	(\$6,311)	(\$5,338)	(\$7,577)	(\$2,567)	\$1,036						(\$52,119)
% +/-	-18%	-8%	-11%	-7%	-6%	-9%	-3%	1%						-8%





CONFIDENTIAL Executive Summary



Church's Chicken #1375
3831 Main St.
Moss Point, MS 39563



Franchise Information:

Founded in San Antonio, TX, Church's Chicken, is one of the largest chicken restaurant chains in the world, with over 1,650 locations in 29 states and 23 global markets. The chain is now headquartered in Atlanta, GA. Franchisor requires prospective franchisees have sufficient net worth and liquidity to consummate the transaction, finance remodels, and possibly develop more locations. Restaurant management experience or related business experience required.

Franchise Agreement Expiration: 6/15/2031

Royalty: 5.0%

Remodel Requirements: \$70,000

Transfer Fee: \$5,000

Advertising: 5.0%

Training Location: Near buyer

Training Period: 8 weeks

Lease Information:

Monthly Base Rent: \$5,157

Percentage Rent: None

Expiration: 15 years

Options: 5 yrs

CAM: TBD

Monthly Property Tax: \$221

Security Deposit: \$5,157

Real Property Available: Yes

Increases: 2% annually

Location Details:

Business Established: TBD

Owner Since: 6/14/2011

Hours of Operation: Su-Th 10a-10p, F-Sa 10a-11p

Building Type: Freestanding with drive-thru

Seating: 21

Licenses Needed: Business, Health

Building Size: 1,260 SF

Employees: Approx 15

Equipment Value: \$200,000

This store was remodeled and re-opened in January 2018. This store is located on Main Street near Southgate Shopping Center. Nearby restaurants include Subway, Wons, Dubs, Friends BBQ, OneStop Wings and Po Boys, Sonic Drive-in. This location is owned by seller.

Remember you have agreed to keep all FranBizNetwork listings confidential.

As a part of the due diligence process you are encouraged to contact other franchisees with questions about the brand, but remember you are bound by a confidentiality agreement and cannot share the location or any details about the business you are considering buying. Please direct any questions you might have for the Seller to your FranBizNetwork agent. Feel free to visit the location(s) as a customer, but be discreet and do not ask questions of employees, managers, or other customers. Please do not draw unnecessary attention to yourself, as rumors of a pending sale can hurt the business.



SALES BY PERIOD

Church's Chicken #1375

	P1	P2	P3	P4	P5	P6	P7	P8	P9	P10	P11	P12	P13	TOTAL
2018	\$54,478	\$84,086	\$69,722	\$63,092	\$56,798	\$55,323	\$50,881	\$47,234	\$0	\$0	\$0	\$0	\$0	\$481,614

